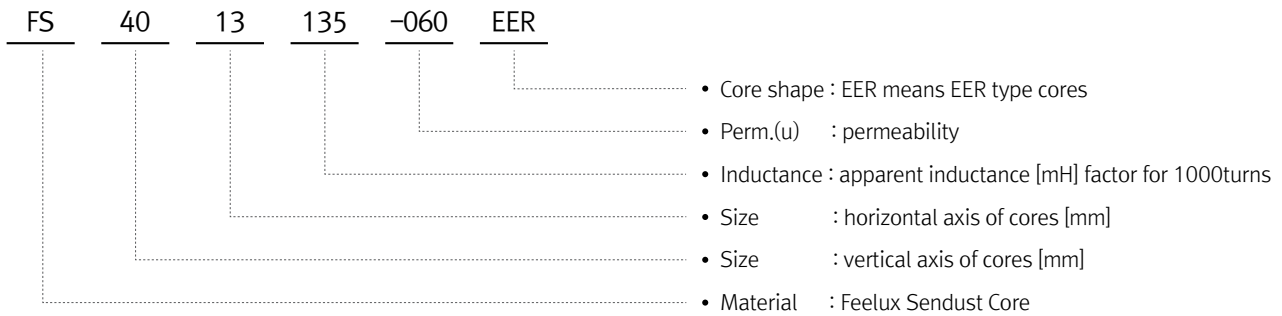


EER Core series

Identification of Feelux EER Core Series



Where,

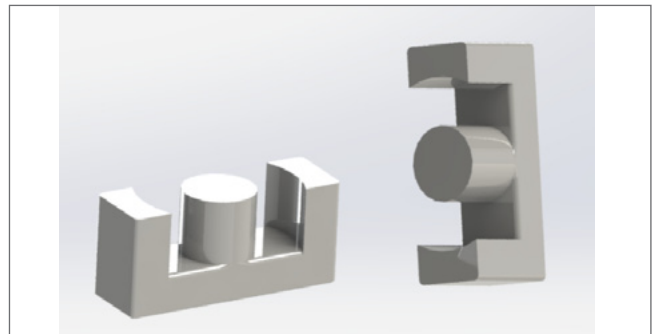
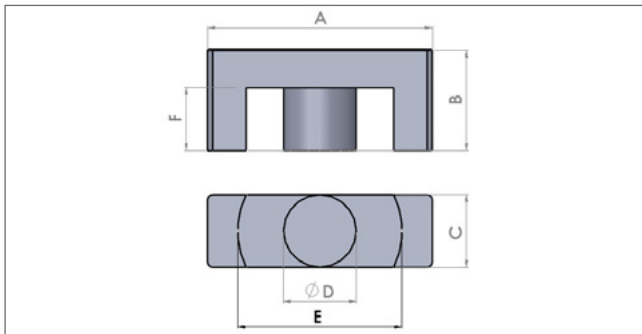
S : Sendust Material [Fe / Al / Si] 135 : 135mH/N² at 1000turns

40 : 40mm

13 : 13mm

Dimension specification of Feelux EER Core series

[Fig.1] mechanical out lines [unit : mm] about EER core series



[Table 2] shows out dimension specification of EER core series

P/N	Dimensions(mm)						Path length (cm)	Cross Section Area(cm ²)	AL value (nH/n ²) $\pm 12\%$		
	A	B	C	D	E	F			26u	40u	60u
2507EER	25.5	9.3	7.5	7.5	19.8	6.2	5.10	0.450	39	53	73
2507EER	25.5	11.0	7.5	7.5	19.8	7.9	5.78	0.450	34	47	65
3010EER	30.6	15.8	9.8	9.8	22.0	11.0	8.66	0.754	38	53	72
3511EER	35.0	15.8	11.3	11.3	25.6	9.8	8.30	1.078	57	78	108
3511EER	35.0	20.7	11.3	11.3	25.6	14.7	10.27	1.078	46	63	87
4013EER	40.0	17.4	13.3	13.3	29.0	10.4	9.13	1.491	72	99	135
4013EER	40.0	22.4	13.3	13.3	29.0	15.4	11.13	1.491	59	81	111
4215EER	42.0	22.4	15.5	15.5	29.4	15.4	10.64	2.026	84	115	158
4215EER	42.0	25.4	15.5	15.5	29.4	18.4	11.84	2.026	75	103	142
4917EER	49.0	18.8	17.2	17.2	36.5	12.2	9.57	2.353	99	136	185
4917EER	49.0	24.7	17.2	17.2	36.5	18.1	11.93	2.353	79	109	149